

freedom  
to focus

Canon

Win&Mac  
Hybrid



## A FULL RANGE OF SCAN FEATURES AND CAPABILITIES IN THIS *PLACE-ANYWHERE* DESIGN

### CANON IMAGE FORMULA DR-C225 II / DR-C225W II

The U-turn path minimises this scanner's footprint, freeing up important desk space for other work. Yet contained in the slim body is a high-speed, high-resolution scanner. Using the wireless equipped DR-C225W II opens up the scanning environment even more.

# STYLISH AND COMPACT DESIGN PERFECTLY FITS IN YOUR WORKING ENVIRONMENT

With the use of a U-turn path, there is no need to leave a space in front of the scanner for document delivery. It hosts a highly intelligent control panel designed for ease of use. In addition, the DR-C225W II wireless model gives you even more freedom through its wireless capabilities. As well as allowing high-speed scanning of 25 ppm\* in either colour or black and white, the document feed can handle many different types of documents. The new CaptureOnTouch makes easy work of day-to-day scanning tasks.

\*A4, Portrait, 200dpi (simplex)

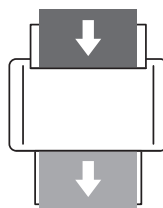


## PLACE ANYWHERE YOU LIKE

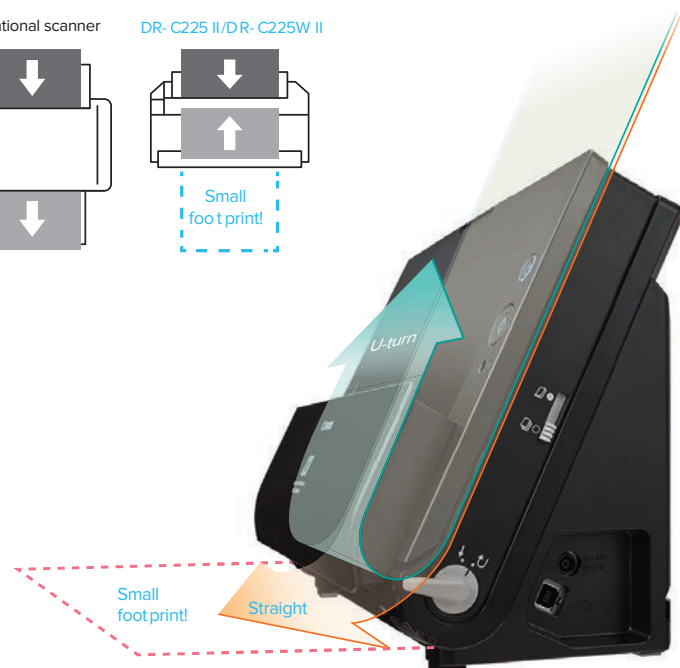
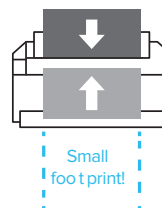
### SMALL FOOTPRINT

Once a document is fed in, it follows a U-turn path and is discharged at the front section of the main unit. This eliminates the need to leave space in front for document delivery and results in outstanding space-saving. Also, switching to straight ejection path makes it possible to scan cards and other thick documents.

Conventional scanner



DR-C225 II/DR-C225W II



# WI-FI CAPABILITY

The DR-C225W II comes with Wi-Fi capability, which gives you more choices of where to place the scanner. A number of compatible devices such as PCs, smartphones and tablets can share a scanner without the need of USB cables. The DR-C225W II offers a new style of scanning that utilizes the scan data across multiple devices.



## Connecting via wireless access point (station mode)



This mode connects the scanner to PCs, smartphones, and tablets via a wireless access point, and allows you to share the scanner among multiple devices. Using a WPS-compatible access point makes the network configuration process that is required for using this mode quick and easy.

## 1-to-1 connection (AP mode)



The scanner connects to PCs, smartphones, and tablets on a 1-to-1 basis in this mode. Detection of the scanner and connections are performed from the other device, allowing you to scan images with your smart devices.

# RELIABLE FEEDING AND POWERFUL PROCESSING

## HIGH-SPEED SCANNING IN A COMPACT PACKAGE

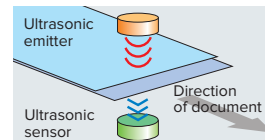


	Simplex (ppm)		Duplex	
	B&W/Grayscale	Colour	B&W/Grayscale	Colour
200dpi	25	25	50	50
300dpi	25	15	50	30

\*A4, Portrait, using USB 2.0

## RELIABLE DOUBLE FEED DETECTION

As documents are fed in, the upper sensor transmits ultrasonic waves that are received by the lower sensor. If multiple feeding should occur, document feeding is automatically halted and a double feed is indicated, so there is no risk of data loss during scanning.



## VARIOUS IMAGE PROCESSING OPTIONS

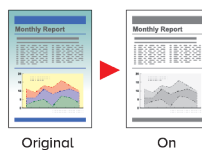
### Full Auto Mode

A Full Auto Mode is available with the colour mode, page size, resolution, and text orientation automatically determined based on the contents of the document. This mode allows you to scan documents that contain pages of varying types under conditions that best suit each type. The mode also includes the Skip Blank Page Function for efficient scanning of only necessary pages.

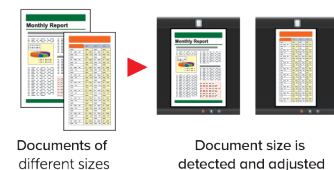
### Auto Colour Detection

This function automatically determines which documents of a mixed batch should be saved in colour, grayscale or B&W, so it's no longer necessary to separate B&W and colour documents prior to scanning.

### Advanced Text Enhancement



### Auto Size Detection



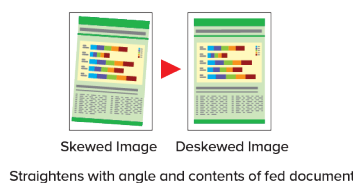
### Character Emphasis



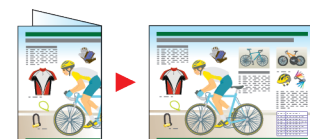
### Skip Blank Page



### Deskew



### Folio Mode





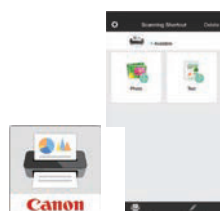
# FAST, RELIABLE AND INTUITIVE SCANNING SOFTWARE



## INTUITIVE OPERATION WITH USER-FRIENDLY DESIGN

The TOP screen is laid out panel-style with large icons, allowing more intuitive operation. The items on the setup screen have also been scaled down to give a simple design. Two scanning methods are available to satisfy a variety of needs including adhoc and daily scanning. As well as "Standard Scanning" where scanning mode and output mode can be separately configured, there is "Scanning Shortcut" where the specific scanning mode and output method are preconfigured, allowing one-click operation. It's also possible to edit scanned images, eliminating the need to redo a scan if the can scan to up to three outputs concurrently.

CaptureOnTouch Mobile is scanning software for smartphones and tablets. Using this software, you can easily scan images from a wirelessly connected scanner, and then upload them to a cloud service. It's available through the App Store and Google Play, but only for the DR-C225W II.



## RICH CLOUD CONNECTIVITY

Send scanned documents to a comprehensive range of cloud-enabled services, including SharePoint, Google Drive, SugarSync, OneDrive and Dropbox.



## EASY-TO-OPERATE DESIGN

### INTUITIVE OPERATION

Brightly-coloured levers are easily identified for more smooth and intuitive use.



## HANDY FACE-UP FEEDING

When scanning, users can orient the document the right way up with the printed side facing them. This is also how it will appear on the display screen, thus making it easy to confirm the order of multiple sheets for increased scanning efficiency.

# DR-C225 II / DR-C225W II SPECIFICATIONS

Type	Desktop sheet-fed scanner		
Document size	Plain paper	U-turn path	Width: 50.8 to 216 mm (2" to 8.5") Length: 70 to 356 mm (2.76" to 14")
		Straight path	Width: 50.8 to 216 mm (2" to 8.5") Length: 53.9 to 356 mm (2.12" to 14") Use Long Document mode to scan documents up to 3,000 mm (118.1") long.
	Business card	50 x 53.9 mm (1.97" x 2.12") or larger Vertical feeding only.	
	Plastic card	53.9 x 85.5 mm (2.12" x 3.37") (ISO standard) Embossed cards can be scanned.	
Document thickness	Plain paper	U-turn path	52 to 128 g/m <sup>2</sup> (0.06 to 0.15 mm) 40 to
		Straight path	209 g/m <sup>2</sup> (0.05 to 0.25 mm)
	Business card	300 g/m <sup>2</sup> (140 lb bond) 0.35 mm (0.0138") or less	
	Plastic card	0.76 mm (0.03") or less	
Document feeding	Automatic sheet feeding		
Feeding capacity	6 mm stack (including curls) or 30 sheets of 80g/m <sup>2</sup> (20 lb bond)		
Scanning element	CMOS CIS		
Light source	LED (red, green, and blue)		
Scanning side	Simplex / Duplex, Skip Blank Page, Folio		
Scanning modes	Black and white, Error diffusion, Advanced Text Enhancement, Advanced Text Enhancement II (for Windows only), 256-level grayscale, 24-bit colour		
Scanning resolutions	150 x 150 dpi, 200 x 200 dpi, 300 x 300 dpi, 400 x 400 dpi, 600 x 600 dpi		
Scanning speed *1 (A4/LTR, portrait, 200 dpi)	Simplex	25 ppm	
	Duplex	50 ipm	
Interface	Hi-speed USB 2.0		
Software	Windows	ISIS/TWAIN driver, CaptureOnTouch, Presto! BizCard, Omnipage, PaperPort, eCopy PDF Pro Office, Evernote *2	
	Mac *3	TWAIN driver, CaptureOnTouch, Presto! BizCard, Presto! PageManager, Evernote *2	
Dimensions (W x D x H)	300 mm (11.81") x 220 mm (8.66") x 156 mm (6.14") with the feed tray closed		
Weight	DR-C225 II : Approx. 2.7 kg, DR-C225W II : Approx. 2.8 kg		
Power requirements	AC100 to 240 V (50/60Hz)		
Power consumption	DR-C225 II	Scanning: 12.7 W or less (120V) 12.8 W or less (200V), Sleep: 1.7 W or less (120V) 1.8 W or less (200V), OFF: 0.5 W or less	
	DR-C22W II	Scanning: 15.6 W or less, Sleep: 4.3 W or less (120V) 4.4 W or less (200V), OFF: 0.5 W or less	
Operating environment	Temperature	10°C to 32.5°C (50°F to 90.5°F)	
	Humidity	20% to 80%	
Options / consumables	Flatbed Scanner Unit 101/201(DR-C225 II only), Exchange Roller Kit (feed roller and retard roller)		

## DR-C225W II SPECIFICATIONS

Basic wireless LAN specifications	Wireless standard	IEEE802.11b/g/n (2.4 GHz only)
	Frequency	2.4 GHz band
	Transfer method	IEEE802.11b: DS-SS system, IEEE802.11g: OFDM system
		IEEE802.11n: MIMO-OFDM system
	Data rate *4	IEEE802.11b: Up to 11 Mbps, IEEE802.11g: Up to 54 Mbps
		IEEE802.11n: Up to 300 Mbps
	Security	WPA-PSK (TKIP/AES), WPA2-PSK (TKIP/AES)
Easy setting	WEP (64/128 bit)	
Connection modes	WPS	

\*1 Actual scanning speed may vary depending on your system configuration and PC. \*2 Installed via Internet connection. \*3 Requires Mac OS X 10.4.11 or later.

\*4 Varies according to environmental conditions. Specifications are subject to change without notice.

Canon and the Canon logo are registered trademarks of Canon Inc. in the United States and may also be trademarks or registered trademarks in other countries. imageFORMULA is a trademark of CANON ELECTRONICS INC. Microsoft, Windows and SharePoint are registered trademarks of Microsoft Corporation in the United States and other countries. Apple and OS X are registered trademarks of Apple Inc. in the United States and other countries. Wi-Fi, Wi-Fi Alliance, the Wi-Fi CERTIFIED logo and the Wi-Fi Protected Setup logo are registered trademarks of the Wi-Fi Alliance. Wi-Fi CERTIFIED and the Wi-Fi Protected Setup are trademarks of the Wi-Fi Alliance. Evernote is trademark or registered trademarks of Evernote Corporation. Other product and company names herein may be the trademarks of their respective owners.



ENERGY STAR and the ENERGY STAR mark are registered U.S. trademarks.



canon.co.nz/business  
0800 222 666

freedom  
to focus